

MEBA
sawing solutions.

MEBASwing

The smart choice
for all purpose bandsawing.

MEBA

Likeable. Flexible. Qualified.



+49 (0) 7333-9644 -0



+49 (0) 7333-9644 -44



info@meba-saw.de



www.meba-saw.de



MEBA Metall-
Bandsägemaschinen GmbH
Lindenstraße 6-8
D-72589 Westerheim
Germany

The Company

The family run business was one of the first companies to specialize exclusively in metal band sawing machines and ranks as one of the leading manufacturers in the industry.

MEBA have a wide range of metal band sawing machines to choose from, ranging from small manual and semi-automatic machines, up to double mitre fully automatic CNC machines. Customers include small workshops, steel fabricators, steel stockholders, and the automotive industry as well as production engineering and heavy industry. MEBA can also manufacture customized infeed and outfeed material handling systems with a variety of material measuring devices to suit tailor made requirements.

MEBA ensures the highest quality: MEBA-band saws are designed, and built using state-of-the-art engineering with improvements always being investigated. The MEBA production team uses standardized processes using the latest production techniques. This results in innovative solutions such as the Europe patented miter system or the new high specification MEBAe-cut band saw which is powered completely with electrical drives, improving your energy footprint and leaning towards a cleaner environment.



The MEBA philosophy

You have the task - we have the solution.

High-class products need detailed and personal consulting as well as planning and realization of individual sawing solutions.

After start-up of a plant, MEBA places great importance on services. Beside regular information about MEBA products, the technical customer service, maintenance and tele-service as well as job order production are basics for a successful cooperation with our customers worldwide.

Index

	Page
MEBASwing 230 G / DG	4
MEBASwing 260 DG / DG-HS	6
MEBASwing 260 GA	8
MEBASwing 320 G-HSS	10
MEBASwing 320 DG	12
MEBASwing 405 DG	14
Additional options and roller tracks	16
Saw blades	18



Our focus is on the people

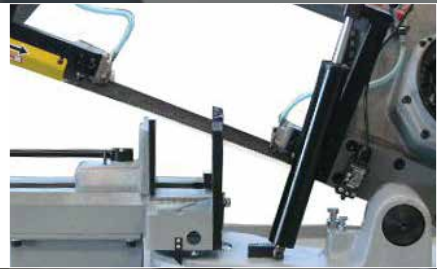
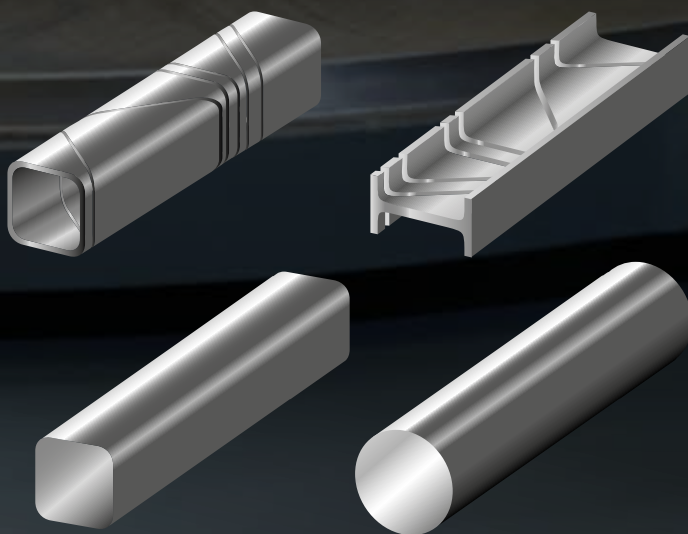
MEBA is successful because enthusiastic, committed personalities get the chance to contribute their abilities and knowledge actively. Working at MEBA means challenging tasks as well as the professional and personal development of each individual. MEBA employees have the possibility to create their own future and therefore the innovation performance and future of the company.

Our lean organisation creates free space for personnel developments: MEBA employees are used and trained where they are interested and have their strengths. Our aim is a long-term partnership.

MEBASwing 230 G / 230 DG

Mitre- and double mitre-cut band saw / manual.

MEBASwing band saws support their operator individually: Different cross-sections, materials and often changing mitre cuts are processed easily. They are the smart choice for all-purpose band sawing and are remarkable in ergonomic and easy handling all while maintaining precision.



Standard equipment

- Fast adjustment of mitre by scale
- The swivel is directly above the intersection of the saw blade and the fix vice jaw so that there is a datum measuring point which does not change with the mitre angle
- Fast material clamping
 - Material is always clamped at 90° regardless of the angle to be cut
- Step-less cutting pressure regulation through weight of the heavy and rigid saw frame and the fine tuning depending on cross-section by hydraulic damping cylinder
- Integrated chip collection tray
- Saw blade drive stops after cut is finished
- Precise saw blade carbide roller guidance
- Measuring device with scale up to 500 mm
- Complete coolant system with immersed pump, can be combined with micro-coolant system



MEBASwing 230 G / 230 DG

Model	Manual
30° lh	Ø 110 120x80
45° lh	Ø 180 200x180
90°	Ø 230 300x150
45° rh (only 230 DG)	Ø 170 200x70
Motor	1,00 / 1,5 kW
Saw blade	2720x27x0,9 mm
Speed of saw blade	28/56 m/min.
Smallest Ø	5 mm
Dimensions (LxWxH)	840x1420x1230 mm
Working height	735 mm
Weight	230 G 310 kg 230 DG 330 kg

MEBAaccessories

MEBA Micro-coolant system
Mounting elements
Material roller track

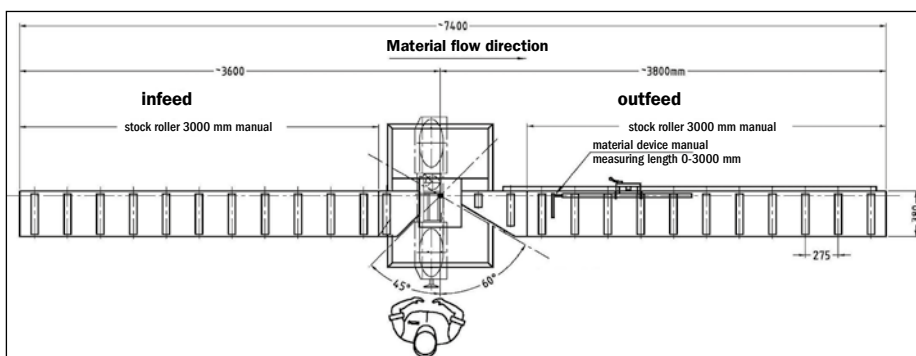
MEBAhighlights

Ergonomic and easy to operate
Multisided area of application
Optimum price / performance ratio
230 DG: Double mitre
Measuring device with scale up to 500 mm



MEBA micro-coolant system

- Dry chips
- No drop formation
- No disposal problem
- Can be retrofitted



MEBASwing 260 DG/260 DG-HS

Double mitre-cut band saw manual / semi-automatic.

Digital measuring device for accurate material positioning

Roller track for material outfeed

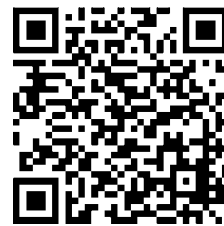
90°
300 mm

45°
180 mm

45°
180 mm

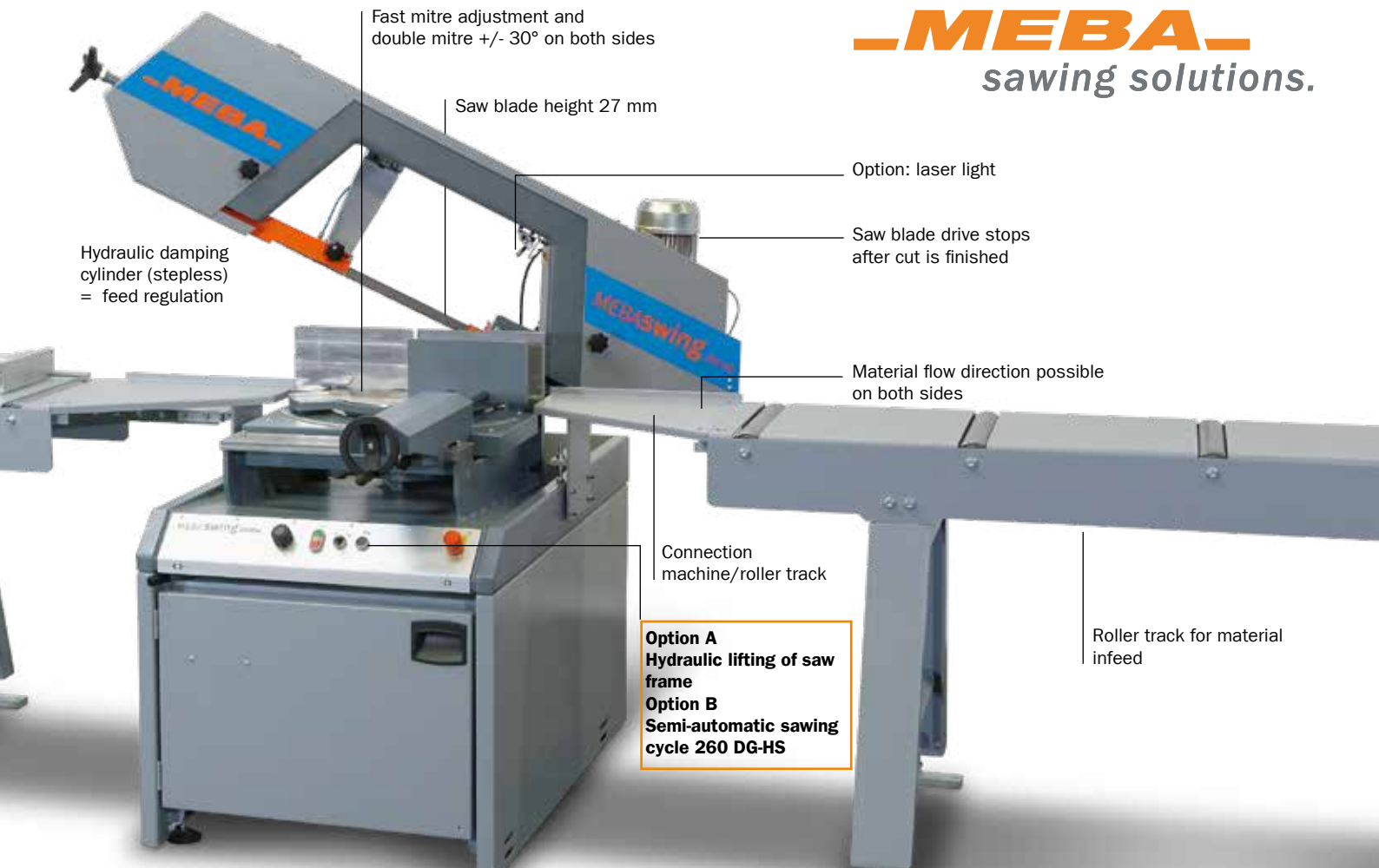
30°
120 mm

30°
120 mm



Standard equipment

- Easy operation by MEBA NC-control with text display
- Hydraulic full-stroke material clamping
- Minimum speed- and saw blade control on the band-wheel
- Fast adjustment of mitre by scale, step-less from 30°-135°. The swivel is directly above the intersection of saw blade and fix vice jaw so that there is a datum measuring point which does not change with the mitre angle
- MEBA flood coolant unit. It can be supplemented optionally by an micro sprayer system
- Fast material clamping
- Material is always clamped at 90° regardless of the angle to be cut
- Step-less cutting pressure regulation through weight of the heavy and rigid saw frame and the fine tuning depending on cross-section by hydraulic damping cylinder
- Integrated chip collection tray
- Saw blade drive stops after cut is finished
- Precise saw blade carbide roller guidance



MEBAswing 260 DG

Model	Manual
30° lh	Ø 130 120x120
45° lh	Ø 200 180x180
90°	Ø 260 300x260
45° rh	Ø 200 180x180
30° rh	Ø 130 120x120
Motor	1,1 / 1,8 kW
Saw blade	3350x27x0,9 mm
Speed of saw blade	35/75 m/min.
Smallest Ø	5 mm
Dimensions (LxWxH)	800x1720x1450 mm
Working height	900 mm
Weight	710 kg

MEBAaccessories

MEBA micro-coolant system as standard, this can be replaced optionally by a coolant system (flood cooling)

Laser light for cutting line indication

Measuring device 0-600mm by scale

MEBAhighlights 260 DG

Compact design

Mitre range up to ±30° in both right and left directions

MEBAoptions

MEBAswing 260 DG-HS

Hydraulic lifting (H) of saw frame

Step-less and hydraulic cutting pressure- and feed control

Additional standard equipment

Fast adjustment of mitre by scale, step-less from 30°-135°

MEBA flood coolant unit is standard. It can be supplemented optionally by an micro sprayer system



MEBA Micro-coolant system

- Dry chips
- No drop formation
- No disposal problem
- Can be retrofitted

MEBASwing 260 GA

Mitre-cut band saw / fully automatic.

90°
300 mm

45°
180 mm

30°
120 mm

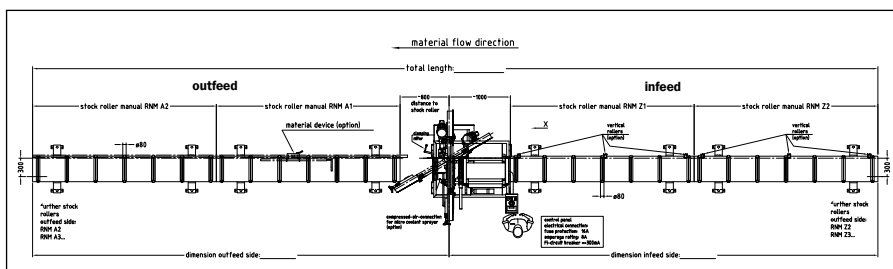


Standard equipment

- Easy operation by MEBA NC-control with text display
- Hydraulic full-stroke material clamping
- Minimum speed- and saw blade control on the band-wheel
- Fast adjustment of mitre by scale
- The swivel is directly above the intersection of the saw blade and the fix vice jaw so that there is a datum measuring point which does not change with the mitre angle
- Complete coolant system with immersed pump, can be combined with micro-coolant system
- Integrated chip collection tray
- Saw blade drive stops after cut is finished
- Rapid lowering of the saw frame via button until material edge
- Precise saw blade carbide roller guidance
- Cutting pressure reduction by heavy, distortion-free cast iron saw frame by electronic lifting cylinder. Electronic-controlled cutting pressure.



- Dry chips
- No drop formation
- No disposal problem
- Can be retrofitted



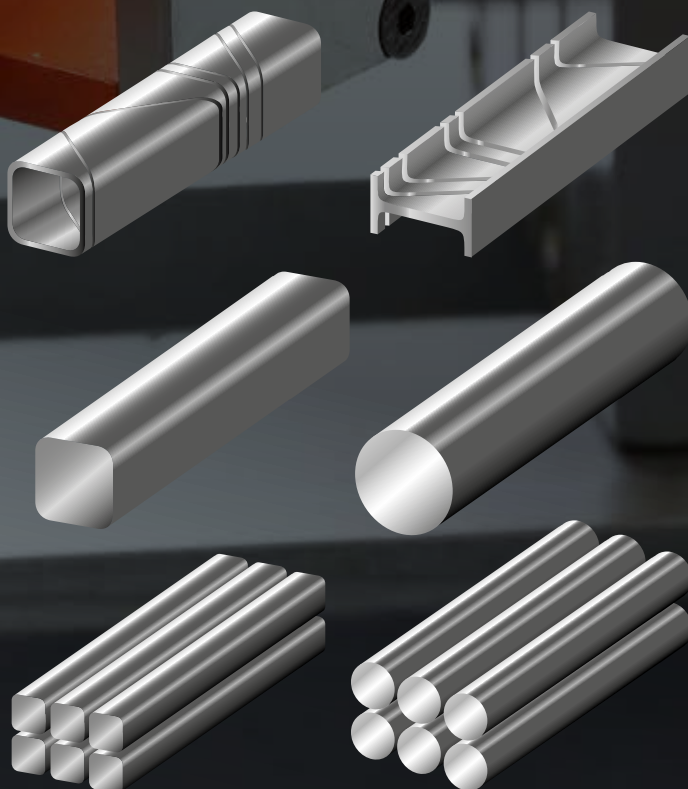
MEBASwing 320 G-HSS

Mitre-cut band saw / semi-automatic.

90°
500 mm

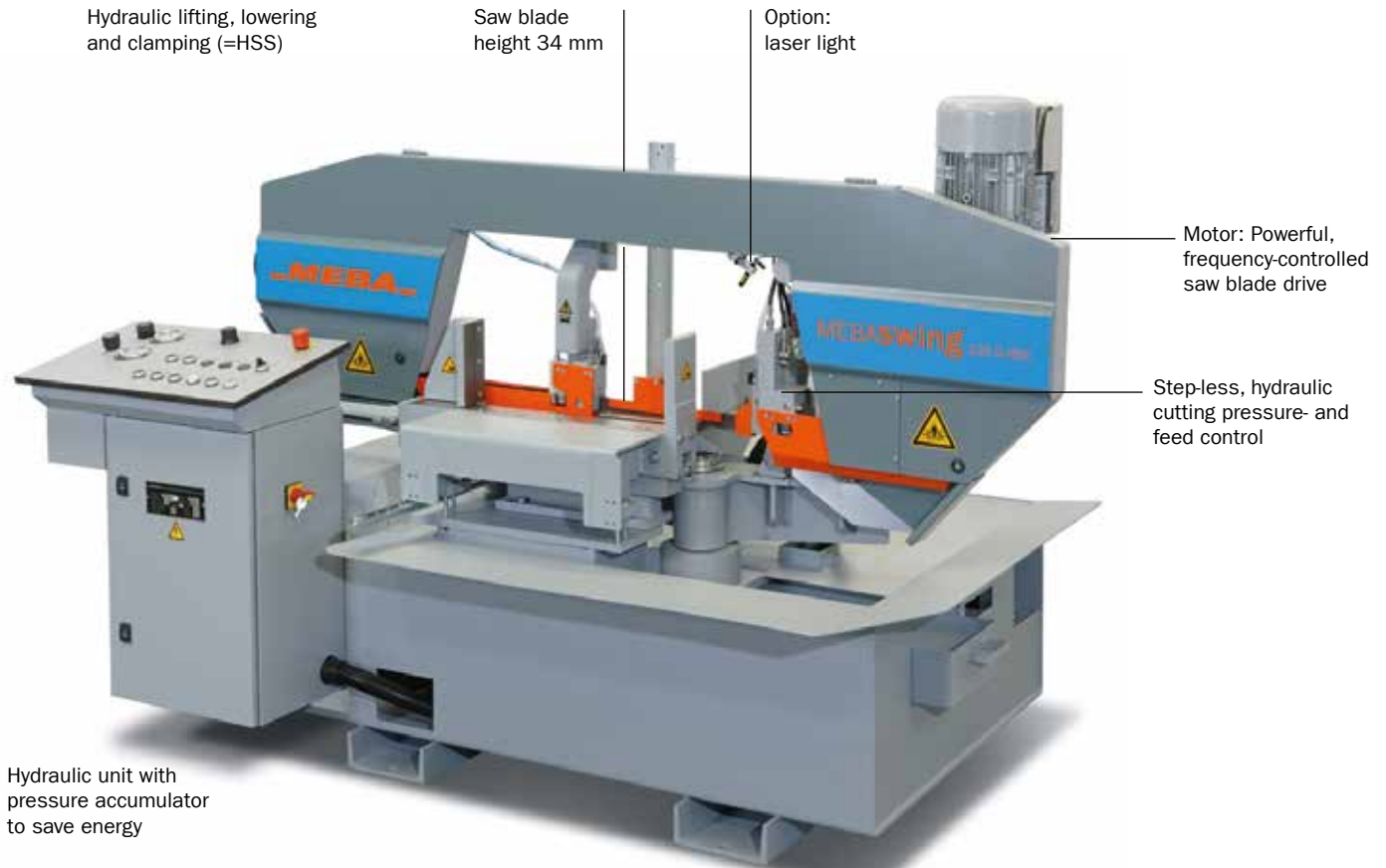
45°
300 mm

30°
200 mm



Standard equipment

- Fast adjustment of mitre by scale, step-less from 90° – 30°
- The swivel is directly above the intersection of saw blade and fix vice jaw so that there is a datum measuring point which does not change with the mitre angle
- Fast material clamping
- Material is always clamped at 90° regardless of the angle to be cut
- Integrated chip collection tray
- Precise saw blade carbide roller guidance



MEBASwing 320 G-HSS	
Model	Semi automatic
90°	Ø 325 500x300
45° rh	Ø 300 300x300
30° rh	Ø 200 200x200
Motor	3 kW AC
Saw blade	4200x34x1,1 mm
Speed of saw blade	15-150 m/min.
Dimensions (LxWxH)	1300x2050x1400 mm
Working height	750 mm
Weight	910 kg

MEBAaccessories
Main vice opens after cut is finished
Minimum speed- and saw blade control on the band-wheel
Hydraulic cutting pressure regulator
Measuring device 0-500 mm by scale
Hydraulic and full-stroke material bundle clamping
Driven saw blade cleaning brush
Material table on infeed side
Mounting elements
MEBA Micro-coolant system



Additional standard equipment
MEBA power package "HSS"
Hydraulic lifting (H) and lowering (S) of the saw frame. Hydraulic clamping (S) of the material
MEBA coolant system with immersed pump
Powerful, frequency-controlled saw blade drive
Hydraulic material full-stroke clamping

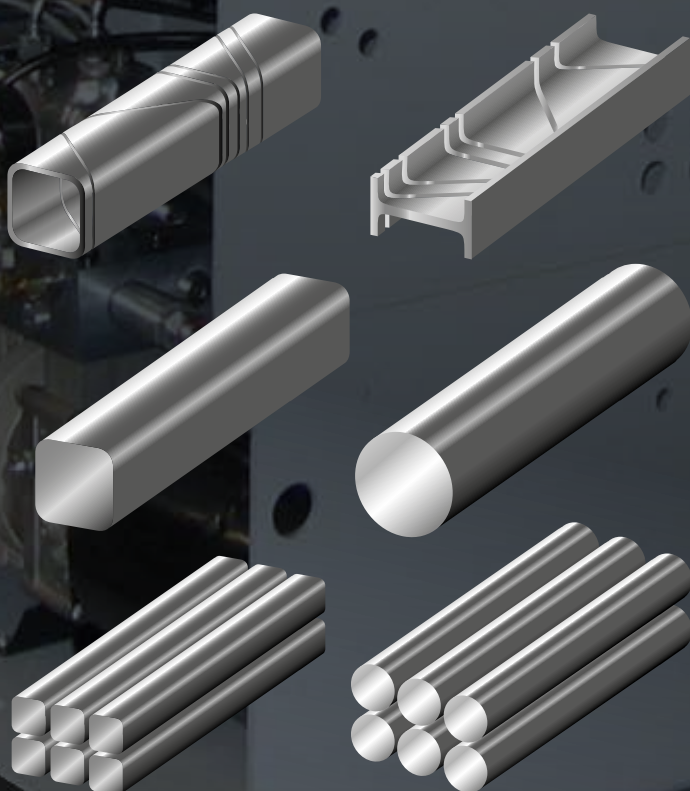
MEBAhighlights 320 G-HSS
Cutting speed can be adjusted step-lessly
Hydraulic feed control
Hydraulic lifting and lowering of the saw frame
Hydraulic clamping of material
Powerful, frequency-controlled saw blade drive
Swiveling area 30° rh

MEBA Micro-coolant system

- Dry chips
- No drop formation
- No disposal problem
- Can be retrofitted

MEBASwing 320 DG

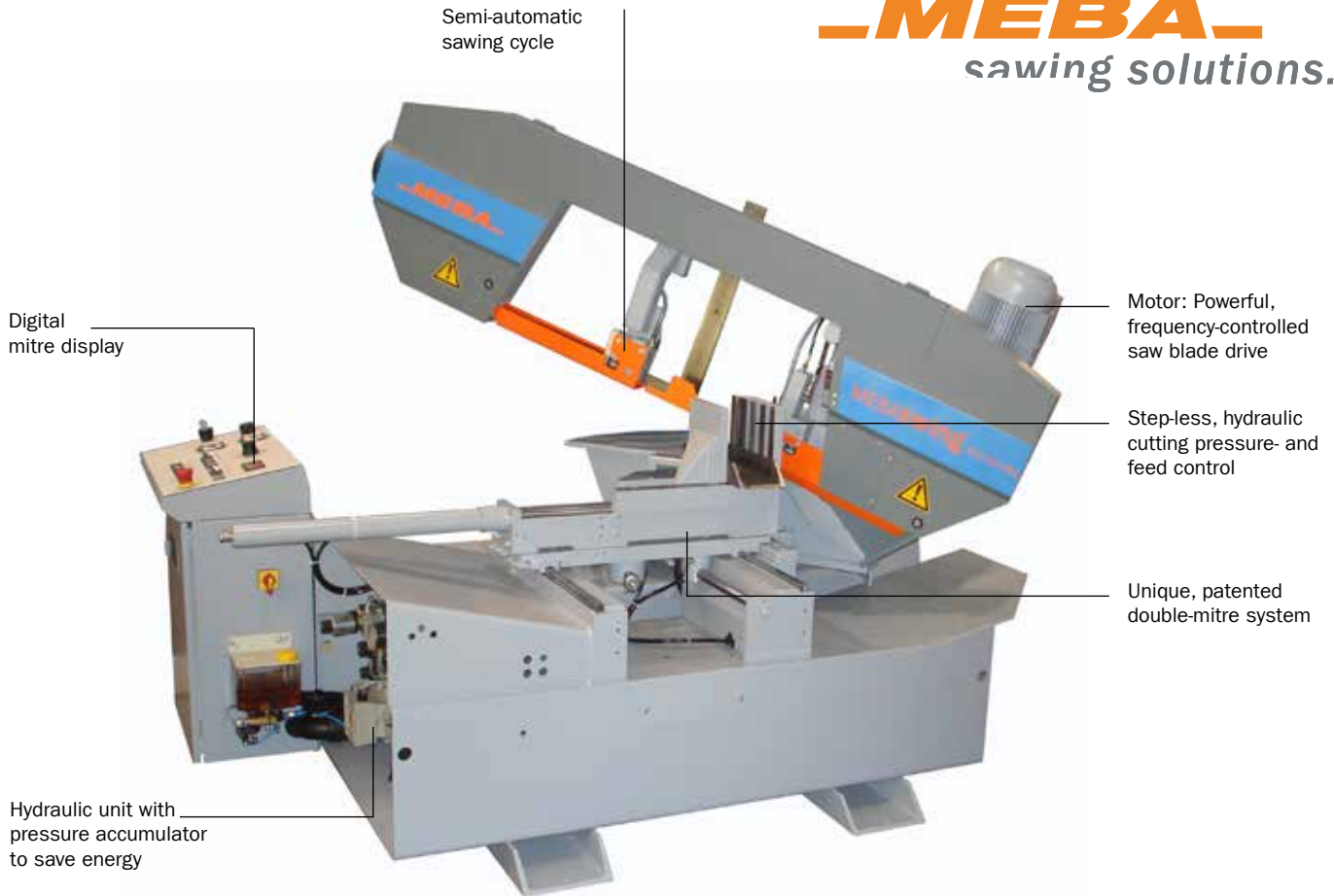
Double mitre-cut band saw / semi-automatic.



Standard equipment



- Fast adjustment of mitre by scale, step-less from 90°-135° The swivel is directly above the intersection of saw blade and fix vice jaw so that there is a datum measuring point which does not change with the mitre angle
- Fast material clamping
- Material is always clamped at 90° regardless of the angle to be cut
- MEBA power package "HSS"
Hydraulic lifting (H) and lowering (S) of the saw frame. Hydraulic clamping (S) of the material. Stepless, hydraulic cutting pressure- and feed control. Display of lowering speed by scale. Display of cutting pressure by manometer. Rapid lowering of the saw frame via button until material edge
- Powerful, frequency-controlled saw blade drive
- Hydraulic material full-stroke clamping
- Integrated chip collection tray
- Saw blade drive stops after cut is finished
Precise saw blade carbide roller guidance



MEBAswing 320 DG

Model	Semi automatic
45° lh	Ø 300 300x300
90°	Ø 325 500x300
45° rh	Ø 300 300x300
30° rh	Ø 200 200x200
Motor	3,0 kW AC
Saw blade	4200x34x1,1 mm
Speed of saw blade	15-150 m/min.
Dimensions (LxWxH)	1450x2200x1400 mm
Working height	750 mm
Weight	1190 kg

MEBAaccessories

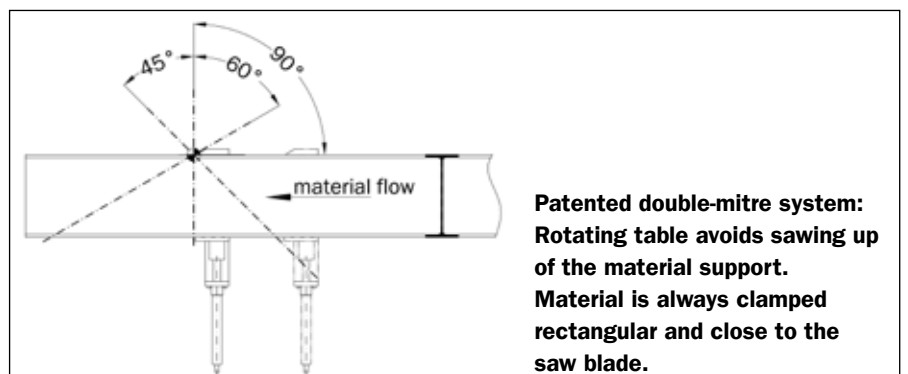
Main vice opens after cut is finished
Laser light for cutting line indication
Minimum speed- and saw blade control on the band-wheel
Hydraulic cutting pressure regulator
Hydraulic and full-stroke material bundle clamping
Driven saw blade cleaning brush
Manual lifting roller for easy material transport
Mounting elements

MEBAhighlights 320 DG

Unique, patented double-mitre system
Cutting speed can be adjusted step-lessly
Hydraulic feed control
Hydraulic lifting and lowering of the saw frame
Hydraulic clamping of material
Swiveling area 30° rh / 45° lh
Powerful, frequency-controlled saw blade drive
Hydraulic cutting pressure regulator
Double-action cylinders

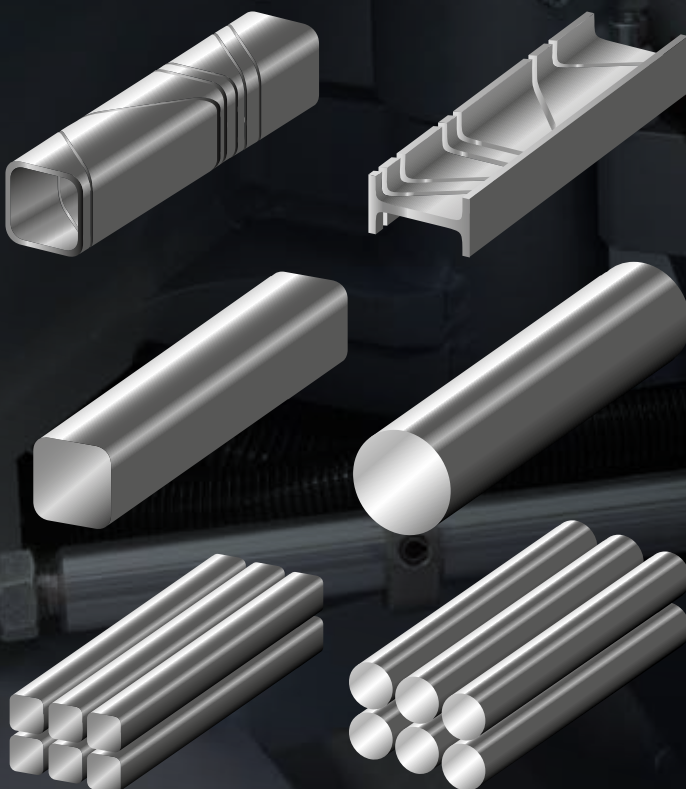
Additional standard equipment

MEBA power package "HSS"
Hydraulic lifting (H) and lowering (S) of the saw frame. Hydraulic clamping (S) of the material. Stepless, hydraulic cutting pressure- and feed control. Display of lowering speed by scale. Display of cutting pressure by manometer. Rapid lowering of the saw frame via button until material edge
MEBA micro-coolant system with immersed pump
Powerful, frequency-controlled saw blade drive
Hydraulic material full-stroke clamping



MEBASwing 405 DG

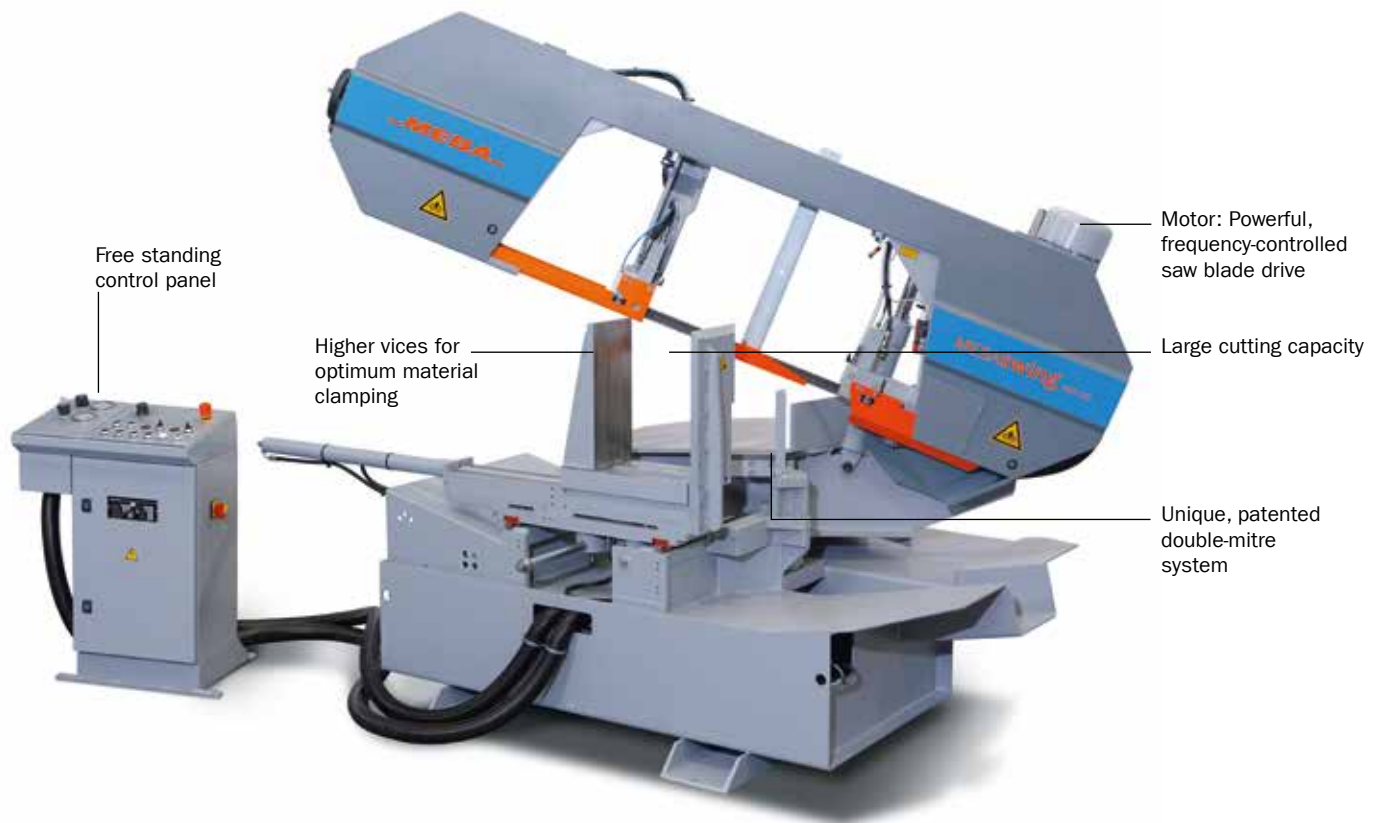
Double mitre-cut band saw / semi-automatic.



Standard equipment



- Fast adjustment of mitre by scale, step-lessly from 90° – 135°. The swivel is directly above the intersection of saw blade and fix vice jaw so that there is a datum measuring point which does not change with the mitre angle
- Fast material clamping
- Material is always clamped at 90° regardless of the angle to be cut
- MEBA power package “HSS”
 - Hydraulic lifting (H) and lowering (S) of the saw frame. Hydraulic clamping (S) of the material. Stepless, hydraulic cutting pressure- and feed control. Display of lowering speed by scale. Display of cutting pressure by manometer. Rapid lowering of the saw frame via button until material edge
- Powerful, frequency-controlled saw blade drive
- Hydraulic material full-stroke clamping
- Integrated chip collection tray
- Saw blade drive stops after cut is finished
- Precise saw blade carbide roller guidance

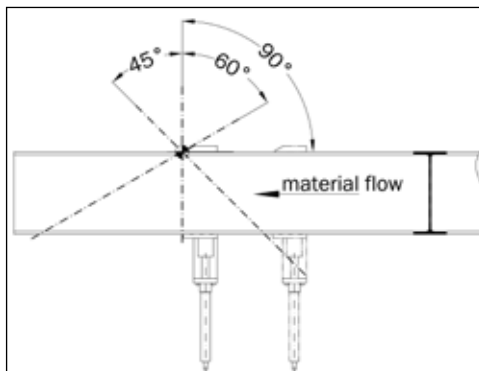


MEBAswing 405 DG	
Model	Semi automatic
45° lh	Ø 300 300x300
90°	Ø 410 620x410
45° rh	Ø 410 420x360
30° rh	Ø 300 300x300
Motor	3,0 kW AC
Saw blade	5000x34x1,1 mm
Speed of saw blade	15-150 m/min.
Dimensions (LxWxH)	1450x2450x1420 mm
Working height	750 mm
Weight	1300 kg

MEBAaccessories
Main vice opens after cut is finished
Laser light for cutting line indication
Minimum speed- and saw blade control on the band-wheel
Hydraulic cutting pressure regulator
Hydraulic and full-stroke material bundle clamping
Driven saw blade cleaning brush
Manual lifting roller for easy material transport
Mounting elements

MEBAhighlights 405 DG
Unique, patented double-mitre system
Cutting speed can be adjusted step-lessly
Hydraulic feed control
Hydraulic lifting and lowering of the saw frame
Hydraulic clamping of material
Powerful, frequency-controlled saw blade drive
Swivelling area 30° rh / 45° lh

Additional standard equipment
MEBA power package "HSS"
Hydraulic lifting (H) and lowering (S) of the saw frame. Hydraulic clamping (S) of the material. Stepless, hydraulic cutting pressure- and feed control. Display of lowering speed by scale. Display of cutting pressure by manometer. Rapid lowering of the saw frame via button until material edge
MEBA coolant system with immersed pump
Free standing control panel
Hydraulic material full-stroke clamping



Patented double-mitre system:
Rotating table avoids sawing up of the material support.
Material is always clamped rectangular and close to the saw blade.

MEBASwing

Additional options. Roller tracks.
Overview

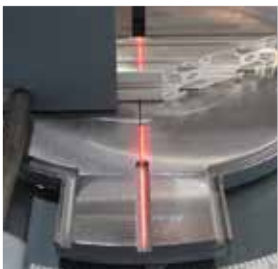


Roller tracks	230 G	230 DG	260 DG	260 GA	320 G-HSS	320 DG	405 DG
---------------	-------	--------	--------	--------	-----------	--------	--------

Roller tracks for MEBAswing load 0,5 kN/roller							
2000x300 – 6 rollers	<input type="checkbox"/>	<input type="checkbox"/>	–	–	–	–	–
3000x300 – 10 rollers	<input type="checkbox"/>	<input type="checkbox"/>	–	–	–	–	–
Connection machine/roller track (230 G outfeed / 230 DG in and outfeed)	<input type="checkbox"/>	<input type="checkbox"/>	–	–	–	–	–
Lateral roller guidance	<input type="checkbox"/>	<input type="checkbox"/>	–	–	–	–	–
Roller tracks for MEBAswing load 1 kN/roller							
1000x500 – 4 rollers	–	–	–	–	<input type="checkbox"/>	<input type="checkbox"/>	<input type="checkbox"/>
2000x500 – 7 rollers	–	–	–	–	<input type="checkbox"/>	<input type="checkbox"/>	<input type="checkbox"/>
3000x500 – 10 rollers	–	–	–	–	<input type="checkbox"/>	<input type="checkbox"/>	<input type="checkbox"/>
Connection machine/roller track for outfeed side (G/DG...)	–	–	–	–	<input type="checkbox"/>	<input type="checkbox"/>	<input type="checkbox"/>
Lateral roller guidance	–	–	–	–	<input type="checkbox"/>	<input type="checkbox"/>	<input type="checkbox"/>
Roller tracks for MEBAswing load 2 kN/roller							
1000x300 – 5 rollers	–	–	<input type="checkbox"/>	<input type="checkbox"/>	–	–	–
Working height 750/900 mm	–	–	<input type="checkbox"/>	<input type="checkbox"/>	–	–	–
2000x300 – 5 rollers	–	–	<input type="checkbox"/>	<input type="checkbox"/>	–	–	–
Working height 750/900 mm	–	–	<input type="checkbox"/>	<input type="checkbox"/>	–	–	–
3000x300 – 7 rollers	–	–	<input type="checkbox"/>	<input type="checkbox"/>	–	–	–
Working height 750/900 mm	–	–	<input type="checkbox"/>	<input type="checkbox"/>	–	–	–
4000x300 – 9 rollers	–	–	<input type="checkbox"/>	<input type="checkbox"/>	–	–	–
Working height 750/900 mm	–	–	<input type="checkbox"/>	<input type="checkbox"/>	–	–	–
Connection machine/roller track lh	–	–	<input type="checkbox"/>	<input type="checkbox"/>	–	–	–
Connection machine/roller track rh	–	–	<input type="checkbox"/>	<input type="checkbox"/>	–	–	–
Lateral roller guidance	–	–	<input type="checkbox"/>	<input type="checkbox"/>	–	–	–

Further roller tracks MEBAswing	230 G	230 DG	260 DG	260 GA	320 G-H	320 G-HSS	320 DG	405 DG
---------------------------------	-------	--------	--------	--------	---------	-----------	--------	--------

Roller tracks for MEBAswing load 5,8 kN/roller								
Manual								
1000x500 – 3 rollers	–	–	–	–	<input type="checkbox"/>	<input type="checkbox"/>	<input type="checkbox"/>	–
2000x500 – 6 rollers	–	–	–	–	<input type="checkbox"/>	<input type="checkbox"/>	<input type="checkbox"/>	–
3000x500 – 7 rollers	–	–	–	–	<input type="checkbox"/>	<input type="checkbox"/>	<input type="checkbox"/>	–
4000x500 – 8 rollers	–	–	–	–	<input type="checkbox"/>	<input type="checkbox"/>	<input type="checkbox"/>	–
6000x500 – 10 rollers	–	–	–	–	<input type="checkbox"/>	<input type="checkbox"/>	<input type="checkbox"/>	–
Roller tracks for MEBAswing load 5,8 kN/roller								
Manual, with stepped rollers								
2000x500 – 6 rollers	–	–	–	–	<input type="checkbox"/>	<input type="checkbox"/>	<input type="checkbox"/>	–
3000x500 – 8 rollers	–	–	–	–	<input type="checkbox"/>	<input type="checkbox"/>	<input type="checkbox"/>	–
4000x500 – 10 rollers	–	–	–	–	<input type="checkbox"/>	<input type="checkbox"/>	<input type="checkbox"/>	–
6000x500 – 12 rollers	–	–	–	–	<input type="checkbox"/>	<input type="checkbox"/>	<input type="checkbox"/>	–
Roller tracks for MEBAswing load 7,6 kN/roller								
Manual								
1000x700 – 3 rollers	–	–	–	–	–	–	–	<input type="checkbox"/>
2000x700 – 6 rollers	–	–	–	–	–	–	–	<input type="checkbox"/>
3000x700 – 7 rollers	–	–	–	–	–	–	–	<input type="checkbox"/>
4000x700 – 8 rollers	–	–	–	–	–	–	–	<input type="checkbox"/>
6000x700 – 10 rollers	–	–	–	–	–	–	–	<input type="checkbox"/>
Roller tracks for MEBAswing load 7,6 kN/roller								
Manual, with stepped rollers								
2000x700 – 6 carrier rollers	–	–	–	–	–	–	–	<input type="checkbox"/>
3000x700 – 8 carrier rollers	–	–	–	–	–	–	–	<input type="checkbox"/>
4000x700 – 10 carrier rollers	–	–	–	–	–	–	–	<input type="checkbox"/>
6000x700 – 12 carrier rollers	–	–	–	–	–	–	–	<input type="checkbox"/>



Additional options	230 G	230 DG	260 DG	260 GA	320 G-HSS	320 DG	405 DG
--------------------	-------	--------	--------	--------	-----------	--------	--------

Main clamping opens automatically after cut is finished	–	–	–	–	<input type="checkbox"/>	<input type="checkbox"/>	<input type="checkbox"/>
Shadow line work light	–	–	–	–	<input type="checkbox"/>	<input type="checkbox"/>	<input type="checkbox"/>
MEBA micro coolant system	<input type="checkbox"/>	<input type="checkbox"/>	<input type="checkbox"/>	<input type="checkbox"/>	<input type="checkbox"/>	<input type="checkbox"/>	<input type="checkbox"/>
Complete coolant system with immersed pump	<input checked="" type="checkbox"/>	<input checked="" type="checkbox"/>	<input checked="" type="checkbox"/>	<input checked="" type="checkbox"/>	<input checked="" type="checkbox"/>	<input checked="" type="checkbox"/>	<input checked="" type="checkbox"/>
Hydraulic lift up of the saw frame	–	–	<input type="checkbox"/>	<input checked="" type="checkbox"/>	<input checked="" type="checkbox"/>	<input checked="" type="checkbox"/>	<input checked="" type="checkbox"/>
Laser light (laser cutting line indication)	–	–	<input type="checkbox"/>	–	–	<input type="checkbox"/>	<input type="checkbox"/>
Minimum speed- and saw blade control on the band-wheel	–	–	–	<input checked="" type="checkbox"/>	<input type="checkbox"/>	<input type="checkbox"/>	<input type="checkbox"/>
Clamping pressure regulator, hydraulic	–	–	–	<input type="checkbox"/>	<input type="checkbox"/>	<input type="checkbox"/>	<input type="checkbox"/>
Measuring device 0 – 500 mm	<input checked="" type="checkbox"/>	<input checked="" type="checkbox"/>	–	–	<input type="checkbox"/>	–	–
Measuring device 0 – 600 mm	–	–	<input type="checkbox"/>	–	–	–	–
Bundle attachment hydraulic, full stroke over the whole width	–	–	–	–	<input type="checkbox"/>	<input type="checkbox"/>	<input type="checkbox"/>
Driven saw blade cleaning brush	–	–	–	–	<input type="checkbox"/>	<input type="checkbox"/>	<input type="checkbox"/>
Special colour, 2-coloured according to RAL-list, only machine	–	–	<input type="checkbox"/>	<input type="checkbox"/>	<input type="checkbox"/>	<input type="checkbox"/>	<input type="checkbox"/>
Material table on infeed side	–	–	–	–	<input type="checkbox"/>	–	–
Material table on infeed side with support roller	–	–	–	–	<input type="checkbox"/>	–	–
Material support roller, manual	–	–	–	–	–	<input type="checkbox"/>	<input type="checkbox"/>
Air compressor for microspayer (only if there is no air)	<input type="checkbox"/>	<input type="checkbox"/>	<input type="checkbox"/>	<input type="checkbox"/>	<input type="checkbox"/>	<input type="checkbox"/>	<input type="checkbox"/>
Mounting elements (4 pcs.)	<input type="checkbox"/>	<input type="checkbox"/>	<input type="checkbox"/>	<input type="checkbox"/>	<input type="checkbox"/>	<input type="checkbox"/>	<input type="checkbox"/>

Consumables	230 G	230 DG	260 DG	260 GA	320 G-HSS	320 DG	405 DG
-------------	-------	--------	--------	--------	-----------	--------	--------

Consumables							
MEBA High-performance spray oil	10 liters	<input type="checkbox"/>	<input type="checkbox"/>	<input type="checkbox"/>	<input type="checkbox"/>	<input type="checkbox"/>	<input type="checkbox"/>
MEBA Coolant concentrate	10 liters	<input type="checkbox"/>	<input type="checkbox"/>	<input type="checkbox"/>	<input type="checkbox"/>	<input type="checkbox"/>	<input type="checkbox"/>
MEBA Chip brush set (5x round-brush, 2 x flat-brush)	–	–	–	–	<input type="checkbox"/>	<input type="checkbox"/>	<input type="checkbox"/>

MEBA High-performance spray oil HL30

Efficient and clean - for micro coolant sprayer



MEBA saw brush set

for 27mm saw blade
5 round-brushes, 2 flat-brushes



LRG = Lateral roller guidance

Further lengths and driven roller tracks on request.

☐ = can be delivered optionally ☒ = standard equipment ☒ = optionally – = can not be delivered

MEBA**accessories**

Measuring devices. Saw blades.

Measuring devices

	Length
Measuring device manual – MEBAwing 230 G / 230 DG / 260 DG	
<ul style="list-style-type: none">• For roller tracks up to 300 mm width and load 0,5kN/roller• Material stop traversable, manual movable• Measuring capacity: 2000- 3000 mm	2 m
	3 m

Measuring device M0 manual – MEBAwing 320 G/320 G-H/320 G-HSS/320 DG/405 DG	
<ul style="list-style-type: none">• For roller tracks up to 500 mm width (also for MEBAeco) with scale and nonius, retracting device, movable• Accuracy (+/- 0.15 mm/m)• Measuring capacity: 2000-6000 mm	2 m
	3 m
	4 m
	6 m

Measuring device ML digital – MEBAwing 260 DG/320 G/320 G-H/320 G-HSS/320 DG/405 DG	
<ul style="list-style-type: none">• For roller tracks up to 500 mm width• Measuring capacity: 2000 mm• Precise linear guidance• Accuracy ± 0,1 mm• Digital display 0,1 mm• Spring loaded stop surface• Manual free stroke device	2 m
	3 m
	4 m
	5 m
	6 m

Measuring device ML automatic – MEBAwing 260 DG/320 G/320 G-H/320 G-HSS/320 DG/405 DG	
<ul style="list-style-type: none">• For roller tracks up to 500 mm width• Autom. measuring device with NC-control• Measuring capacity: 2000 mm• Precise linear guidance• Accuracy (+/- 0.1 mm/m)• Recognition of position by non-touch measuring system• Pneumatic clamping and lifting, lowering after each cut• Automatic relieving during the cut	3 m
	4 m
	5 m
	6 m

Further lengths on request.

Measuring device manual

Measuring device M0 manual

Measuring device ML digital

Measuring device ML automatic



Saw blades

Saw blade dimensions (mm)	Saw blade quality				Models
	Bi-Metal	Bi-Metal S	PB	H1	
2720 x 27 x 0,9	x	x	x	x	230 G/DG
3350 x 27 x 0,9	x	x	x	x	260 DG / 260 DG-HS
3700 x 27 x 0,9	x	x	x	x	260 GA
4200 x 27 x 0,9	x	x	x	x	320 G
4200 x 34 x 1,1	x	x	x	x	320 G-HSS / 320 DG
5000 x 34 x 1,1	x	x	x	x	405 DG

Saw blade dimensions (mm)	Available teeth dimensions			
	Bi-Metal	Bi-Metal S	PB	H1
	For all workshop cuts For profiles and bundle cuts	For steel up to 45 HRC- For serial cuts im automatic operation For bundle cuts of large material dimensions and solid material For non iron metals and fine steel profiles	For bundle cuts with big material dimensions For both cutting of big profiles and full material Specially for T-beams	Suitable for all machining on medium to high toughness metal cutting materials For solid material and thick walled tubes like tool steel and stainless steel For alloyed steels, rust-free steels and carbon steel
27 x 0,9	2/3; 3/4; 4/6; 5/8; 6/10; 8/12; 10/14	2/3; 3/4; 4/6; 5/8; 6/10; 8/12; 10/14	3/4; 4/6	2/3; 3/4; 4/6
34 x 1,1	2/3; 3/4; 4/6; 5/8; 6/10; 8/12	2/3; 3/4; 4/6; 5/8; 6/10; 8/12	2/3; 3/4; 4/6; 6/10; 8/12	1,5/2; 2/3; 3/4; 4/6

We test the best raw materials and offer the optimum saw blade for each band saw and each field of application. Saw blades are produced on latest welding- and grinding machines and guarantee a fast delivery time.

Furhter lengths available. Minimum purchasing quantity 5 pieces. Subject to modification.

MEBAServices



Machine consulting
Technical customer service
Repair & Maintenance
Start-up
Spare parts service
Trainings
Teleservice
Saw blade service
Job order production
Info-Material

MEBA Metall-Bandsägemaschinen GmbH

Lindenstraße 6-8
D-72589 Westerheim
Germany

Phone (+49) 0 73 33-96 44-0
Fax (+49) 0 73 33-96 44-44

www.meba-saw.de
info@meba-saw.de